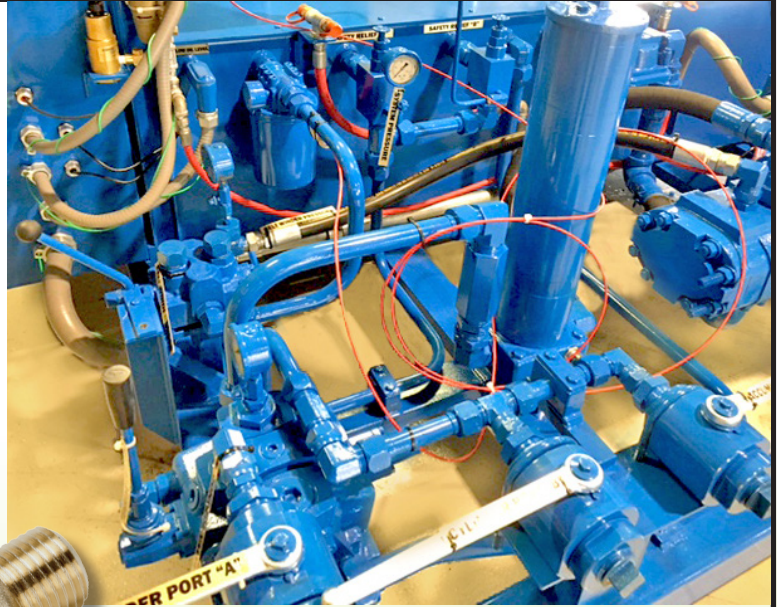


FLUID COMPONENT SERVICES AT A GLANCE

Fluid Component Services is a technical service provider to the **energy, marine, and industrial markets** providing custom preventative maintenance, installation, flushing and troubleshooting services for marine and industrial companies on a national level. We have over 40 years of expertise and have built a quality reputation for engineering, manufacturing, installation and servicing of hydraulic and pneumatic systems and sub-systems.



One Company... One Complete **SOLUTION**

- Hydraulics - Industrial / Mobile / Marine
- Automation - Pneumatics / Electronics
- Electromechanical Systems
- Fluid Connectors - Instrumentation / Industrial
- Engineered Systems and Solutions
- Factory Authorized Repair Service
- Installation and Field Service



**WE KEEP
YOUR
BUSINESS
IN MOTION**

3256 US Route 60, Ona WV 25515

phone 740.894.3139 | email fcs@fluidcomponent.com

www.fluidcomponent.com



www.rg-group.com

Fluid Component Services

Hydraulic System Design

INDUSTRIAL | MOBILE | MARINE

Fluid Component Services is dedicated to designing custom-built hydraulic systems that operate reliably in the most extreme environments. Our Engineering Department will work with you to design a system that meets all your operational and financial goals.

FCS is a dedicated specialty services business offering hydraulic expertise to a variety of industries including mining, steel mills, steel and aluminum fabrication, material handling, marine and many other forms of industrial manufacturing.

Custom Field Installations

Custom field installations are more like a work of art than a hydraulic system. Each one is uniquely different and needs to be treated as such. FCS will provide you with a custom-designed hydraulic system with field installation and start-up

assistance that will meet your most demanding specifications.

Field Plumbing Services

FCS field plumbing services include custom fabrication and installation of all hydraulic tubing and hosing, system flushing

(removal of harmful contaminants using our custom-designed **nitrogen purge** flushing system) and primer/enamel paint based on customer requirements.

Marine Service

Our Marine Division is ready to take on any waterfront project with specialists who have all the skills and expertise needed for any scope or size. Our Certified Service Technicians can be on location anywhere in the country, ready for fast and reliable repair, system modification or to create and install new hydraulic systems. We have over four decades of experience with commercial, recreational, industrial and government contact work.

Marine Services

We offer general hydraulic system repair, hydraulic steering cylinder rebuild or replacements. Fast and reliable turnaround is our proven trademark. We believe that doing the job right the first time is the only way to do business.

Maintenance & Flushing Services

Oil Cleaning

Hydraulic systems require regularly scheduled maintenance. Keeping your preventative maintenance up-to-date will drastically reduce downtime and equipment wear and tear resulting from harmful contaminant build-up over the lifetime of your system, saving you time and money. Our certified hydraulic technicians can be onsite and efficiently filter your existing hydraulic fluid, change pressure and return filters and suction strainers with minimal downtime.

Flushing Services

When components begin to fail, harmful contaminants can spread throughout your hydraulic system. Over time, varnish and carbon buildup can compromise system reliability and longevity. Complete system flushing removes harmful contaminants and varnish accumulation and will extend the life of your system.

Repair Service

Breakdowns can happen any time, usually when it's most inconvenient for you. We understand how important it is for you to have repairs made as quickly and efficiently as possible. FCS offers timely and cost-competitive repair and rebuild services. We'll use our knowledge and expertise to get your machine back up and running at full capacity in no time.

