

# Bourdon Tube Pressure Gauge Type 111.11 Compressed Gas Regulator Gauge Standard Series

WIKA Datasheet 111.11

## Applications

- Compressed gas regulators
- Beverage dispensing machines
- Suitable for all media that will not obstruct the pressure system or attack copper alloy parts

## Product features

- UL-listed (UL-252a or UL-404)
- Polished brass or gold-painted steel case
- Free of oil and grease

## Specifications

### Design

ASME B40.100

### Sizes

1½", 2" & 2½" (41, 53 & 68 mm)

### Accuracy class

± 3/2/3% of span (ASME B40.100 Grade B)

### Ranges

Vacuum / Compound to 200 psi (16 bar)  
Pressure from 15 psi (1 bar) to 6,000 psi (400 bar)  
or other equivalent units of pressure or vacuum

### Working pressure

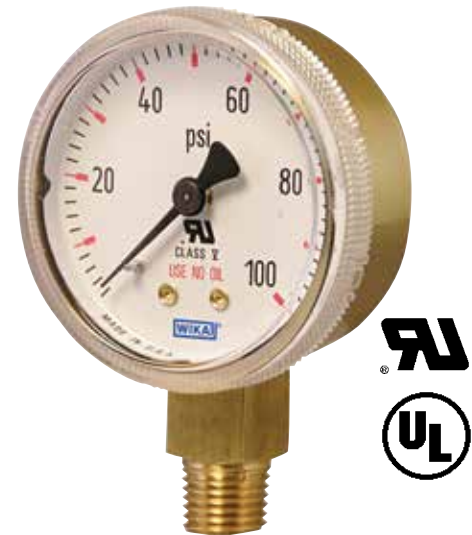
Steady: 3/4 of full scale value  
Fluctuating: 2/3 of full scale value  
Short time: full scale value

### Operating temperature

Ambient: -40°F to 140°F (-40°C to 60°C)  
Media: 140°F (+60°C) maximum

### Temperature error

Additional error when temperature changes from reference temperature of 68°F (20°C) ±0.4% of span for every 18°F (10°K) rising or falling.



Bourdon Tube Pressure Gauge Type 111.11

### Pressure connection

Material: Copper-Alloy  
Lower Mount (LM): 1½", 2" and 2½"  
Center Back Mount (CBM); 1½" and 2"  
1/8" NPT, 1/4" NPT, limited to wrench flat area  
Restrictor Press-fit, 0.012" orifice

### Bourdon Tube

Material: copper alloy  
≤ 870 psi (60 bar): C-shape  
> 870 psi (60 bar): Helical

### Movement

Copper alloy

### Dial

White aluminum with stop pin and black lettering  
"USE NO OIL" in red

### Pointer

Black aluminum, non-adjustable

**Case**

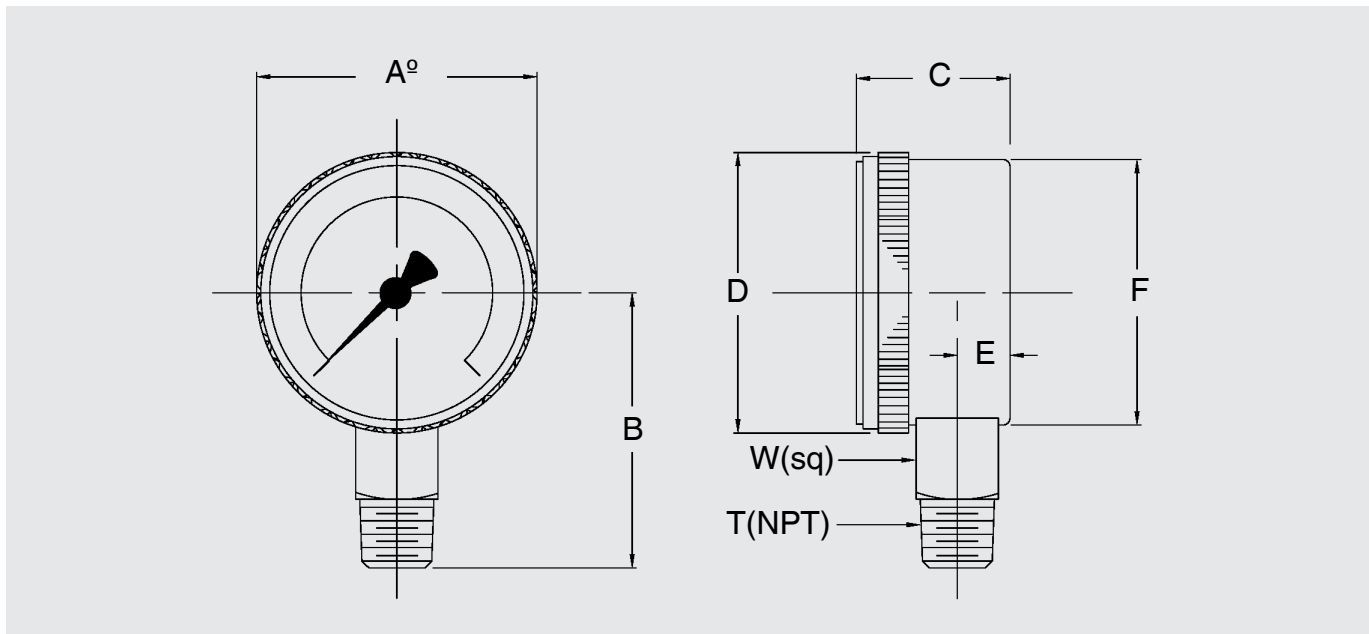
1½": gold-painted steel  
 2" & 2½": SS ZrN coated (= brass polished look) or gold-painted steel

**Window**

Twist-lock clear polycarbonate

**Optional Extras**

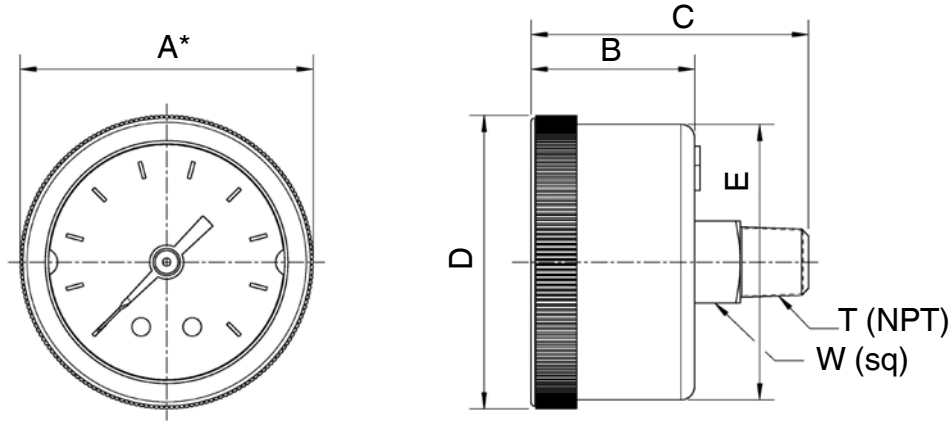
- Special case colors
- Nickel-plated socket
- Chrome-plated steel case
- Chrome-plated ABS case
- Black ABS case
- Stainless steel case (2" size only)
- Special threaded connection
- Custom dial layout
- Heat sealed bag, thread cap and "oxygen cleaned" label
- Other pressure scales available:  
 bar, kPa, MPa, kg/cm<sup>2</sup> and dual scales

**Dimensions - 1½", 2" and 2½" Lower Mount (LM)**

Size		A	B	C <sup>1</sup>	D	E <sup>1</sup>	F	T	W	Weight
1.5"	mm	41	36.6	24	42.9	9	40	-	12	
	in	1.5	1.44	0.94	1.69	0.35	1.57	1/8"	0.47	0.14 lb
2"	mm	53	54	29	58	10.5	50.8	-	14	
	in	2.0	2.12	1.14	2.28	0.42	2.0	1/4"	0.55	0.24 lb
2.5"	mm	68	60	31	72.4	12	67.6	-	14	
	in	2.5	2.36	1.22	2.85	0.47	2.66	1/4"	0.55	0.33 lb

<sup>1</sup> For 2½" painted steel case, C dimension changes to 1.14" (29 mm), and E dimension changes to 0.35" (9 mm)

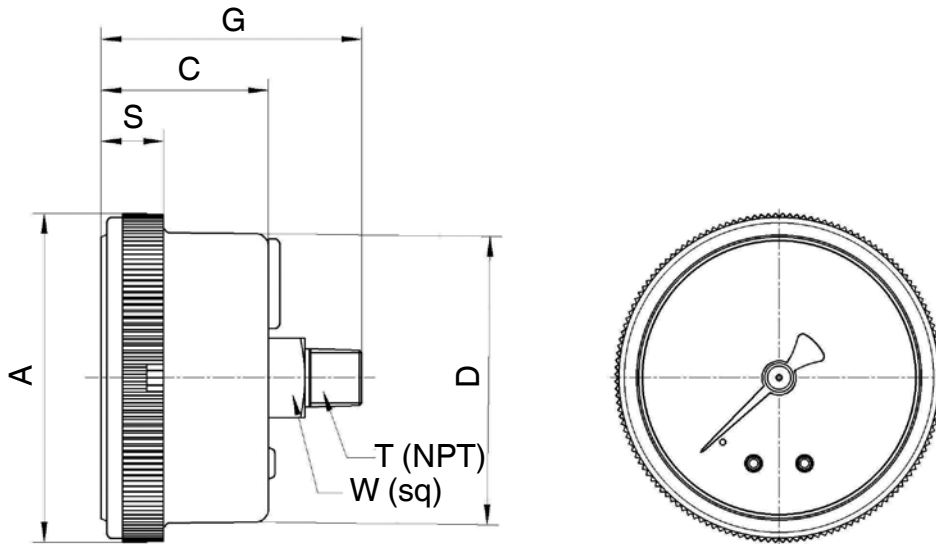
## Dimensions - 1½" Center Back Mount (CBM)



\* = nominal size

Size		A*	B	C	D	E	T	W	Weight
1.5"	mm	41	24	40.6	42.9	40.6	-	12	
	in	1.5	0.94	1.60	1.69	1.6	1/8"	0.47	0.14 lb

## Dimensions - 2" Center Back Mount (CBM)



Size		A	C	D	G	S	T	W	Weight
2"	mm	57.8	29	50.7	48.3	11	-	14	
	in	2.275	1.14	2	1.9	0.43	1/8" or 1/4"	0.44	0.24 lb

### Ordering information

Pressure gauge model / Nominal size / Scale range / Size of connection / Optional extras required.  
 Specifications and dimensions given in this leaflet represent the state of engineering at the time of printing.  
 Modifications may take place and materials specified may be replaced by others without prior notice.



**WIKA Instrument, LP**  
 1000 Wiegand Boulevard  
 Lawrenceville, GA 30043-5868  
 Tel: 888-WIKA-USA • 770-513-8200  
 Fax: 770-338-5118  
 E-Mail: info@wika.com  
 www.wika.com