

Both of these pumps can create **VACUUM...** **which one do YOU need**

The fact is you need to know a lot more than just inches of mercury (Hg) to determine the best solution for your vacuum application.

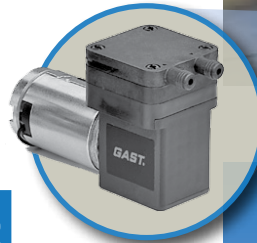
That's why you need the vacuum **EXPERTS** at **RG Group**

Our experts know that the level of vacuum, no matter what the unit of measure, is only one determining factor in making the proper choice. That's why we offer vacuum solutions from miniature diaphragm pumps the size of your thumb (.075HP / 4LPM open flow) for portable, battery-powered, medical, scientific and analytical applications – up to massive liquid ring vacuum pumps (1,000HP / 22,000CFM open flow) used in large process and power generation applications.

Do you know the real cost of your production line vacuum pumps?

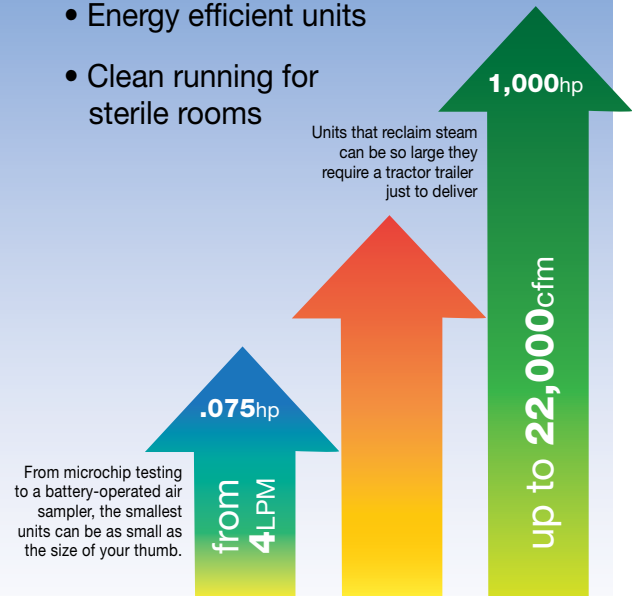
Our vacuum specialists can help you evaluate your vacuum installation and get real-time performance data to provide you with the answers and recommendations you need to maximize efficiency and minimize energy consumption. In material handling applications, we can determine if a larger pump is required or does the surface area of suction cup effectors be increased, to produce the lifting force you need.

[Talk to one of our experts today!](#)



Some of the special features available:

- Separate drives or motor-mounted
- Extremely quiet running models
- Variable speed pumps
- Energy efficient units
- Clean running for sterile rooms



* **CFM, LPM** = the amount of air flow per cubic foot per minute or litre per minute

** **Hg** = inches of mercury



P: 877.870.2692
www.rg-group.com

RG GroupSM

Innovative Motion Control and Fluid Handling Products and Solutions

time for an audit

Our team of experts always look for the most efficient solutions and improvements to existing technologies.

For a correct dimensioning and selection of a vacuum pump, it's important to know and assess overall use and working environment in which it will operate. We can perform energy audits on your plant or work environment to maximize efficiency and reduce overall electrical costs.



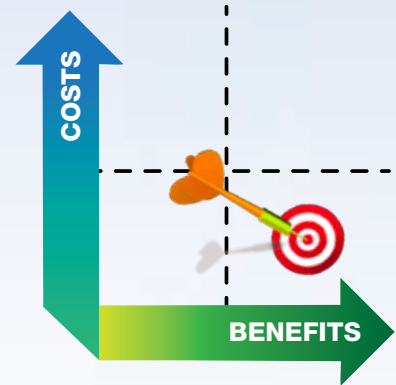
We have the right solution for your industry

- Packaging, meat packing, modified atmosphere packaging, tumbling, filling and sealing
- Food processing, canning and vacuum cooling
- Woodworking, CNC cutting and routing, loading and unloading systems
- Rubber and plastics thermoforming, extruder barrel degassing, mold degassing, material handling.
- R&D systems, central laboratory vacuum
- Electronics, pick and place components
- Material handling, vacuum lifting, pick and place, bulk material transfer, pneumatic conveying, bottling
- Paper and printing (sheet and roll-fed), bindery and envelope converting machines
- Medical and surgical
- Mining, ceramics and brick-making
- Environmental, ground remediation
- Fine vacuum applications/scientific vacuum, semiconductor manufacturing, analytics, R&D labs and thin film coatings

We are proud to represent these premiere global brands:

GAST
A Unit of IDEX Corporation

Atlas Copco



Need someone to install your systems?

We have our own in-house **Field Service Team**, which can help with your installation and/or maintenance. We'll be there to support you through the lifetime of your equipment.

